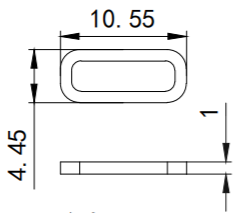
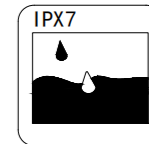
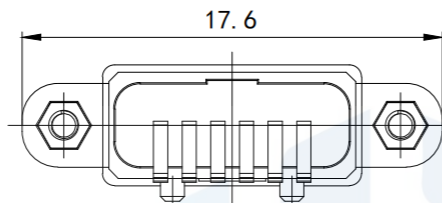


RoHS2.0
Compliant

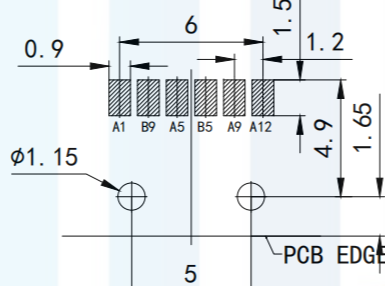
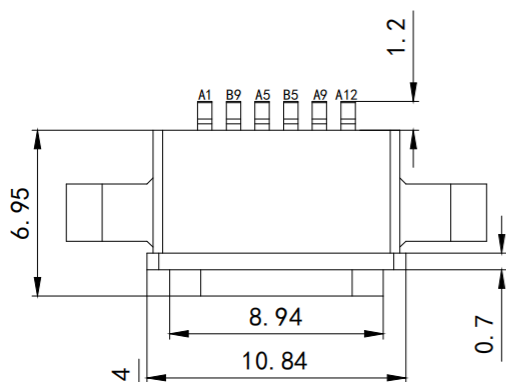


防水圈图示

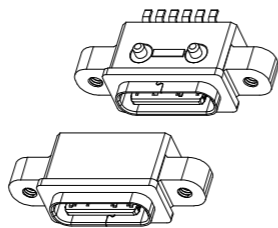
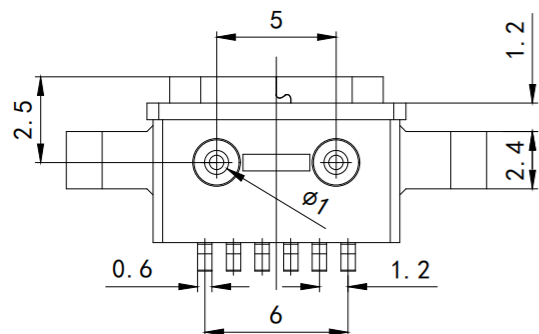
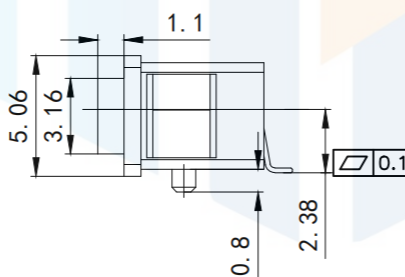
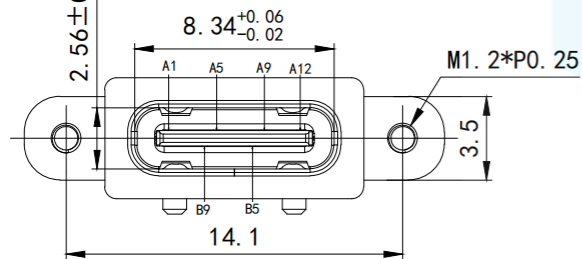


NOTE:

1. Electrical characteristics:
 - 1.1. Contact area: contact resistance 40mΩ Max, allowing 10mΩ variation
Test conditions :20mv, 100mA measurement.
 - 1.2. Contact current: 3A Max.
 - 1.3. Rated voltage: 30V.
 - 1.4. Withstand voltage: 100VR.M.S.
 - 1.5. Insulation resistance: at least 100 megohm.
2. Mechanical properties:
 - 3.1. Insertion force: 0.51-2.04Kg
 - 3.2. Pullout force: 0.82-2.04Kg
 - 3.3. Durability: 0.61-2.04Kg
 - 3.4. Insertion and removal times: 10000 times.
4. Working environment: -20°C to +85°C.



RECOMMEND P. C. B LAYOUT
TOLERANCE UNSPECIFIED ±0.05mm



TOLERANCE			东莞市恒祺电子科技有限公司		
X. XXX	±0.05		Dongguan Hengqi Electronic Technology Co., Ltd		
X. XX	±0.15	https://www.hq-dz.com		phone:15812872448	
X. X	±0.20	TITLE: TYPE C 6P板上防水母座 带螺母 1.2 L=6.95		PART NO:TYPE-C6P-BS1695FS	
X.	±0.30			DRAWING NO:17.6*5.06*6.95	
ANGLE	±5.0°	DRAWN: CHECKED: APPROVED:		DATE: 18-10-08	
PROTECTON 				DATE: 18-10-08	UNIT: mm
				DATE: 18-10-08	SCALE: FULL
		DATE: 18-10-08		SIZE: A4	