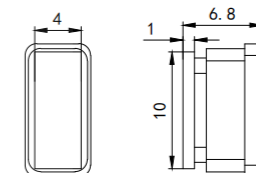
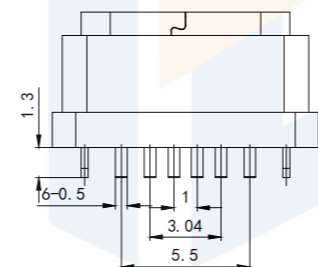
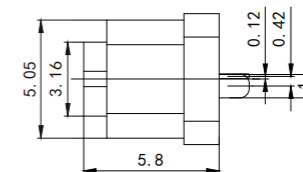
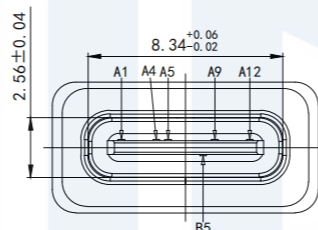
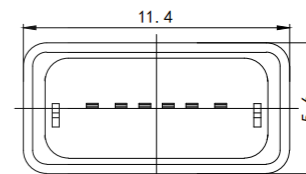
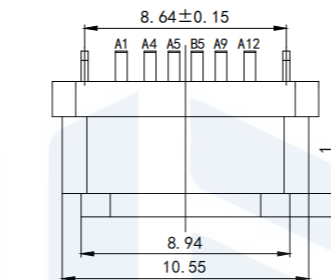
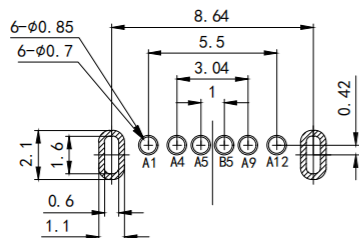


RoHS2.0  
Compliant



装前塞示意图

RECOMMEND P. C. B LAYOUT (COMPONENT SIDE)  
TOLERANCE FOR PCB LAYOUT IS  $\pm 0.05$

NOTE:

1. Electrical characteristics:
  - 1.1. Contact area: contact resistance 40m $\Omega$  Max, allowing 10m $\Omega$  variation  
Test conditions :20mv, 100mA measurement.
  - 1.2. Contact current: 3A VBUS pin; 1.25A for GND Pin; The other pins are 0.25A.
  - 1.3. Rated voltage: 5V.
  - 1.4. Withstand voltage: 100VAC.
  - 1.5. Insulation resistance: at least 100 megohm.
2. Mechanical properties:
  - 3.1. Insertion force: 0.5-2.0Kg
  - 3.2. Pullout force: 0.6-2.04Kg
  - 3.3. Insertion and removal times: 10000 times.
4. Weldability: temperature 210-230°C, time 10 seconds.
5. Working environment: -20°C to +85°C.

<b>TOLERANCE</b>			东莞市恒祺电子科技有限公司 Dongguan Hengqi Electronic Technology Co., Ltd		
X. XXX	$\pm 0.05$				
X. XX	$\pm 0.15$	https://www.hq-dz.com			phone:15812872448
X. X	$\pm 0.20$	TITLE:		PART NO:TYPE-C6P-LC1058FS	
X.	$\pm 0.30$	TYPE C 6P 立插防水母座H=5.8mm 分方向		DRAWING NO:11.4*5.6*5.8	
ANGLE	$\pm 5.0^\circ$	DRAWN:		DATE:	18-10-08
<b>PROTECTON</b> 		CHECKED:		DATE:	18-10-08
		APPROVED:		DATE:	18-10-08
				UNIT:	mm
				DATE:	18-10-08
				SIZE:	A4