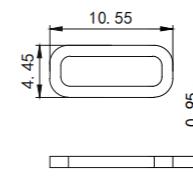
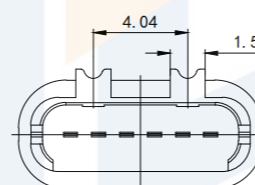
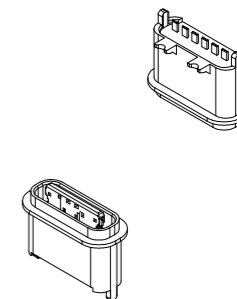
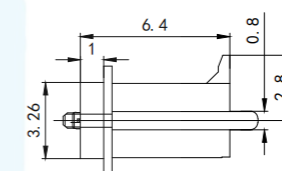
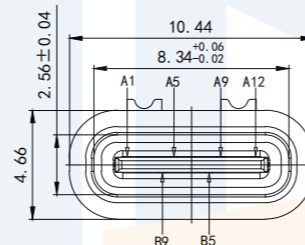
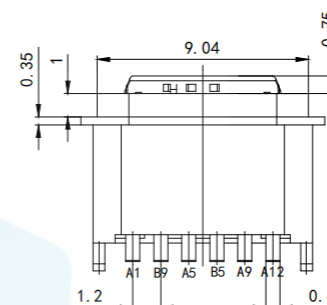
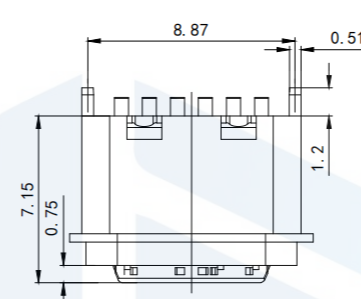
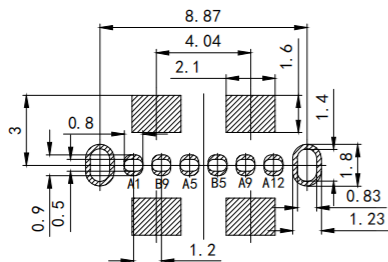


RoHS2.0
Compliant



防水圈图

RECOMMEND P. C. B LAYOUT (COMPONENT SIDE)
TOLERANCE FOR PCB LAYOUT IS ± 0.05

NOTES:

SPECIFICATION:

1. CURRENT RATING: 3.0 A
2. VOLTAGE RATING: 3.0 V
3. VBUS & GND PINS AND OTHER PINS: 40m Ω /PIN MAX
- SHIELD: 50m Ω /MAX LLCR MAX. CHANGE OF ALL PINS: 10 Ω m
4. INSULATION RESISTANCE: 100M Ω MIN
5. DIELECTRIC WITHSTAND VOLTAGE, AC 100V FOR 1MINUTE
6. INSERTION FORCE: 0.5~2.0kgf
7. UNMATING FORCE: 0.8~2.0kgf
8. DURABILITY: 10000 CYCLES
9. OPERATING TEMPERATURE: -35° C~+85° C
10. THE PEAK TEMPERATURE ON THE BOARD SHALL BE MAINTAINED FOR 10 SECONDS AT 210~230° C
11. WATERPROOF: IP-X7.

TOLERANCE	X. XXX	± 0.05		东莞市恒祺电子科技有限公司 Dongguan Hengqi Electronic Technology Co., Ltd		
	X. XX	± 0.15		https://www.hq-dz.com phone:15812872448		
PROTECTON	X. X	± 0.20	TITLE: TYPE C 6P 立插防水母座L=7.15mm 带钢片粉末冶金	PART NO:TYPE-C6P-LC1715FS		
	X.	± 0.30		DRAWING NO:10.44*4.66*7.15		
	ANGLE	$\pm 5.0^\circ$	DRAWN:		DATE: 18-10-08	UNIT: mm
			CHECKED:		DATE: 18-10-08	SCALE: FULL
			APPROVED:		DATE: 18-10-08	SIZE: A4