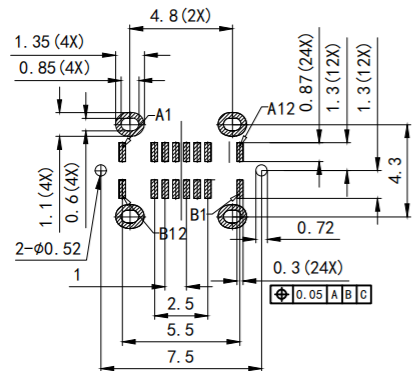
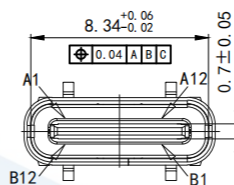
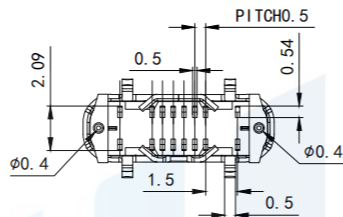


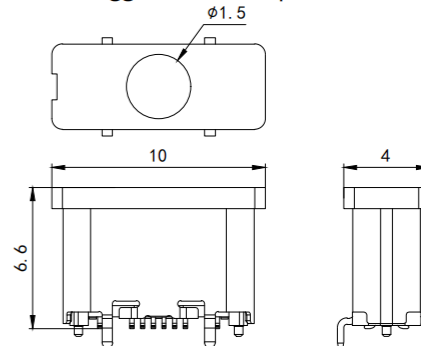
RoHS2.0
Compliant



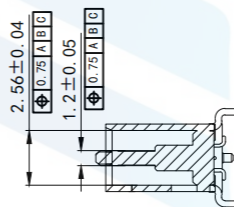
RECOMMENDED P.C.B LAYOUT
TOLERANCE UNSPECIFIED ±0.05mm



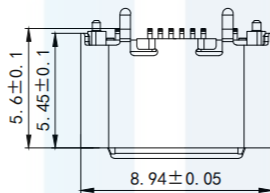
Suggested adsorption size



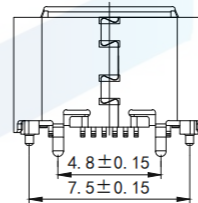
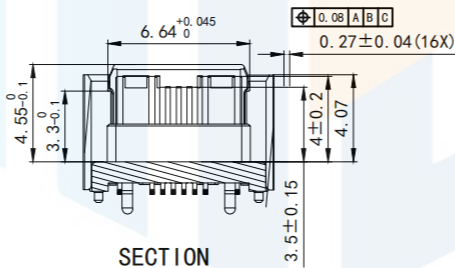
ADDED SUCTION COVER VIEW



SECTION
A-A
SCALE 1:1



SECTION
B-B
SCALE 1:1



PIN	SIGNAL NAME	PIN	SIGNAL NAME
A1	GND	B12	GND
A4	VBUS	B9	VBUS
A5	CC1	B8	SBU2
A6	D+	B7	D+
A7	D-	B6	D-
A8	SBU1	B5	CC2
A9	VBUS	B4	VBUS
A12	GND	B1	GND

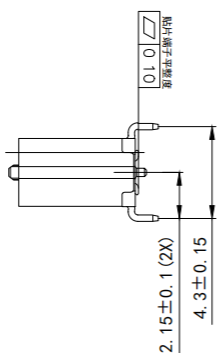
Note

1. Material

- 1.1 Housing: LCF
- 1.2 Contact: C7025, T=0.15mm
- 1.3 Shell: SuS304 T=0.3mm

2. ELECTRICAL:

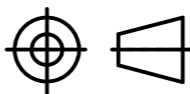
- 2-1: CURRENT RATING:
VBUS AND GND CONTACTS RATED AT 1.25A PARALLELED FOR A TOTAL OF 5A;
- 2-2: INITIAL CONTACT RESISTANCE :40 MEGOHMS
- 2-3: DIELECTRIC WITHSTANDING VOLTAGE: 100V AC MIN;
- 3: MECHANICAL CHARACTERISTICS:
3-1: MATING FORCE: 5~20N
3-2: UNMATING FORCE: 8~20N (INITIAL), 6~20N (AFTER 10000 CYCLES)
3-3: FREQUENCY: 200+50 CYCLES /HOUR, 10000 CYCLES
3-4: OPERATING TEMPERATURE ; -40' ~80'



TOLERANCE

X. XXX	±0.05
X. XX	±0.15
X. X	±0.20
X.	±0.30
ANGLE	±5.0°

PROTECTON



东莞市恒祺电子科技有限公司

Dongguan Hengqi Electronic Technology Co., Ltd

<https://www.hq-dz.com>

phone: 15812872448

TITLE:

TYPE C 16P 立式贴片4小脚定位插板
H=5.6/6.5/6.8/7.4MM

PART NO: TYPE-C16P-LT056

DRAWING NO: 8.94*5.6*3.16

DRAWN:

CHECKED:

APPROVED:

DATE:

DATE:

DATE:

18-10-08

18-10-08

18-10-08

UNIT:

SCALE:

SIZE:

mm

FULL

A4