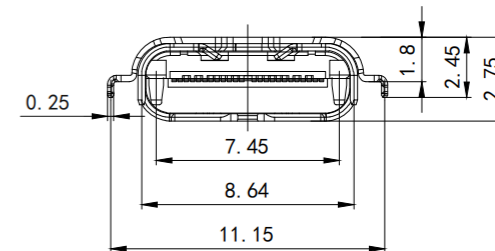
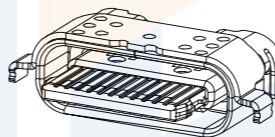
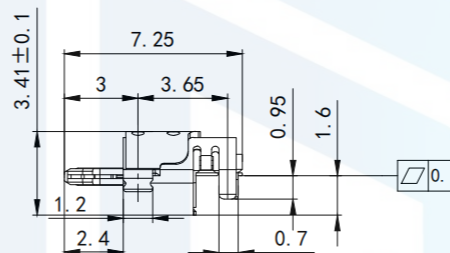
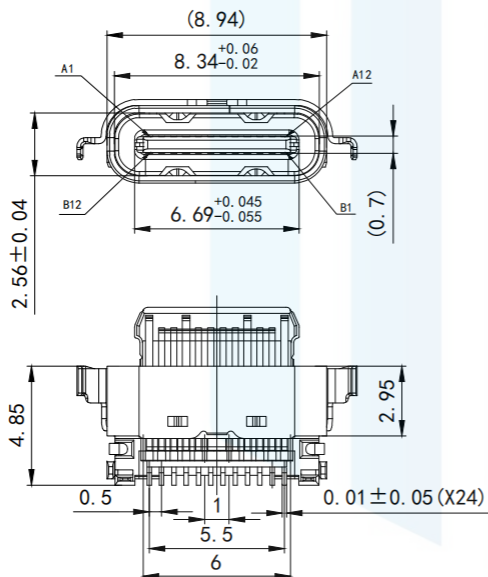
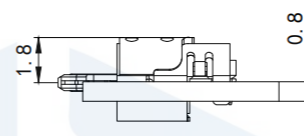
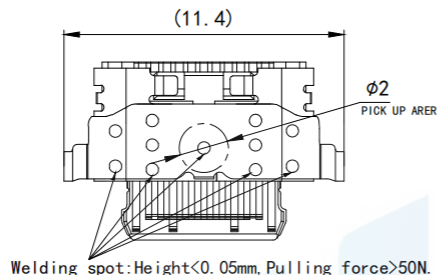


RoHS2.0  
Compliant



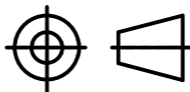
NOTES: 1. PRODUCT SPECIFICATIONS:

- 1.1. CURRENT RATING: 1.5A/PIN MAX (A4, A9, B4, B9) 1.25A/PIN MAX (A1, A12, B1, B12), 0.25A (DHER PIN)
  - 1.2. TEMPERATURE RANGE: -40C~85C
  - 1.3. CONTACT RESISTANCE: 30 MILLIONHM MAX
  - 1.4. INSULATION RESISTANCE: 100MEGHMS MIN.
  - 1.5. DIELECTRIC WITHSTANDING VOLTAGE: 100VAC
  - 1.6. PULG INSERTION DIRECTION WITHSTANDS INSERTION FORCE >13.6Kg
  - 1.7. INSERTION FORCE : 5N~20N
  - 1.8. UNMATING FORCE: INITIAL: 8N~20N: DURABILITY: 6N~20N
  - 1.9. DURABILITY: 10,000 CYCLES
- (1.6/1.7/1.8/1.9 Need to cooperate with the whole machine test)

TOLERANCE

X. XXX	±0.05
X. XX	±0.15
X. X	±0.20
X.	±0.30
ANGLE	±5.0°

PROTECTON



东莞市恒祺电子科技有限公司

Dongguan Hengqi Electronic Technology Co., Ltd

<https://www.hq-dz.com>

phone: 15812872448

TITLE:

TYPE C 24PIN沉板1.6两脚插板A11  
舌头外露2.4

PART NO: TYPE-C24P-CBA11

DRAWING NO: 11.4\*4.85\*3.41

DRAWN:

CHECKED:

APPROVED:

DATE:

DATE:

DATE:

18-10-08

18-10-08

18-10-08

UNIT:  
mm

SCALE:  
FULL

SIZE:  
A4