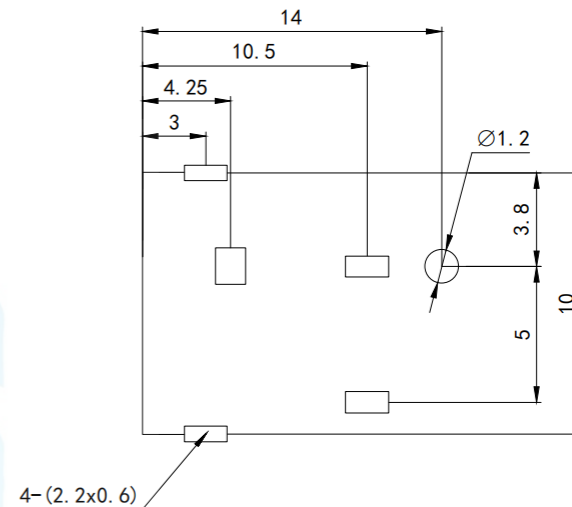
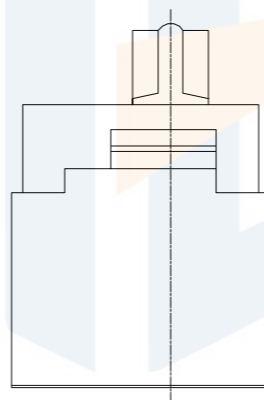
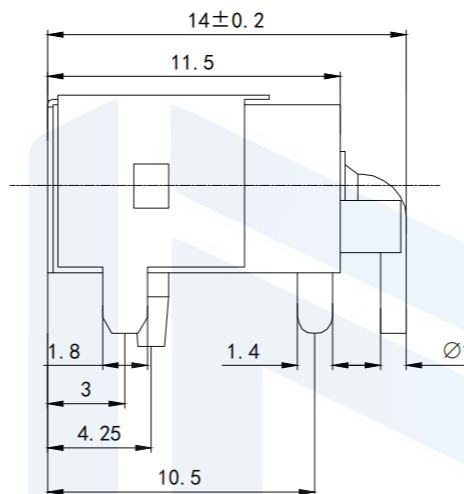
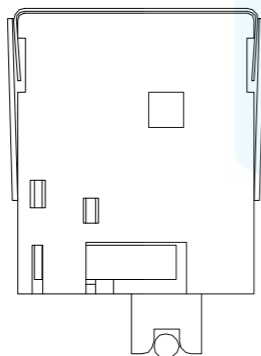
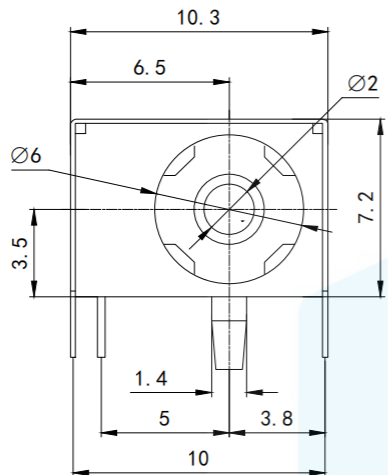
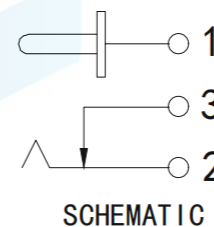


RoHS2.0  
Compliant



PCB LAYOUT  
TOP VIEW (Tolerance: ±0.05)



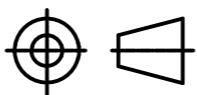
Technical requirements

1. Rated load: DC 20V 5A
2. Contact resistance:  $\leq 0.03 \Omega$
3. Insulation resistance:  $\geq 100 \Omega$  DC250V
4. Withstand voltage: AC 500V (50Hz)/min
5. Insertion force: 3~20N
6. Mechanical life: 5000 times
7. Operation temperature range:  $-20^{\circ}\text{C} \sim 70^{\circ}\text{C}$
8. Preservative temperature range:  $-25^{\circ}\text{C} \sim 75^{\circ}\text{C}$

TOLERANCE

|        |       |
|--------|-------|
| X. XXX | ±0.05 |
| X. XX  | ±0.15 |
| X. X   | ±0.20 |
| X.     | ±0.30 |
| ANGLE  | ±5.0° |

PROTECTON



东莞市恒祺电子科技有限公司

Dongguan Hengqi Electronic Technology Co., Ltd

<https://www.hq-dz.com>

phone: 15812872448

TITLE:

DC电源插座

PART NO: DC-044D

DRAWING NO: 14\*10.3\*7.2

DRAWN:

DATE:

18-10-08

UNIT:  
mm

CHECKED:

DATE:

18-10-08

SCALE:  
FULL

APPROVED:

DATE:

18-10-08

SIZE:  
A4