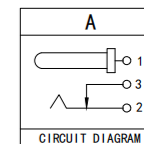
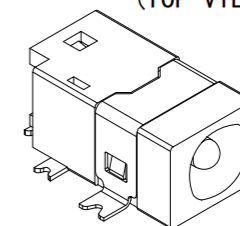
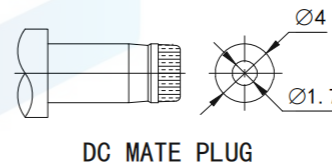
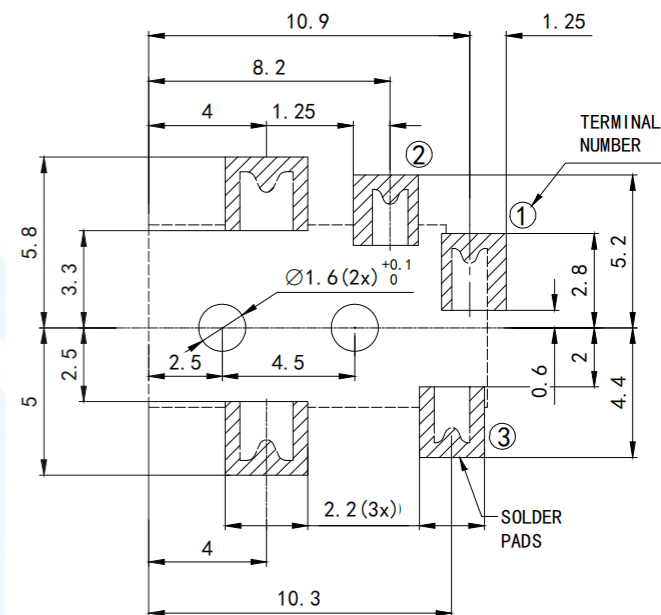
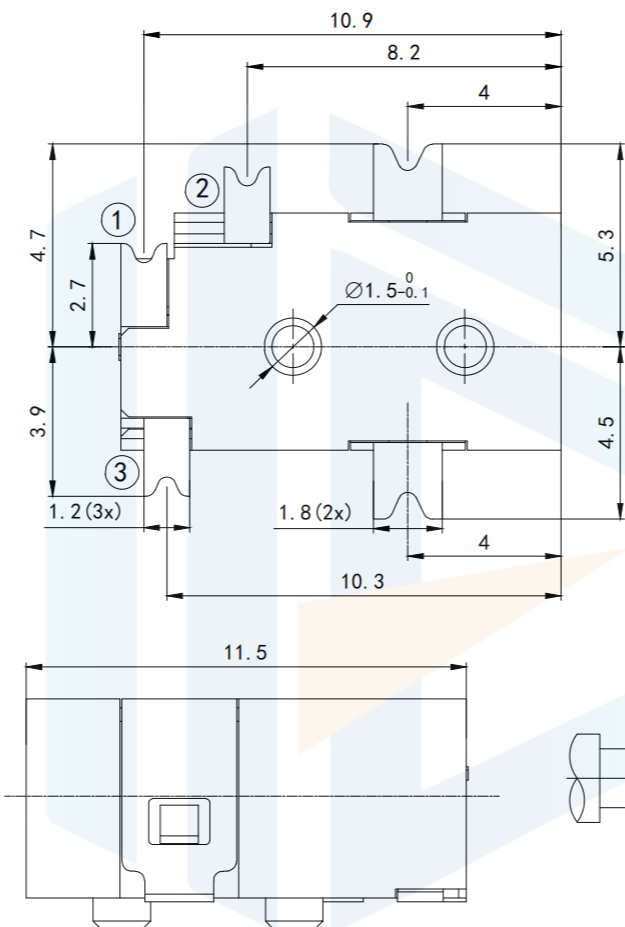
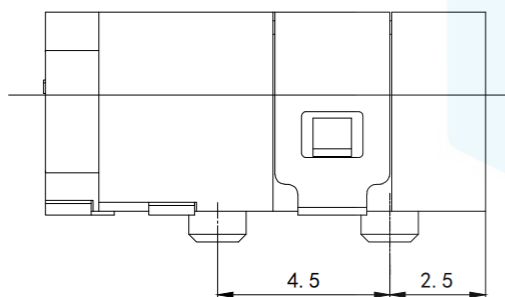
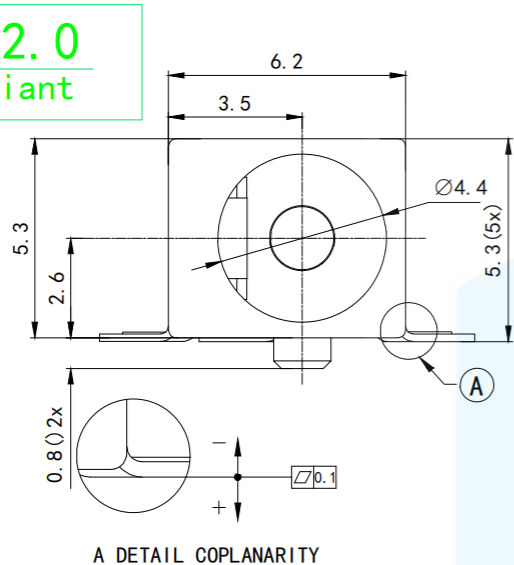


RoHS2.0
Compliant



MODEL NO.	G
CENTER PIN	$\varnothing 1.65\text{mm}$

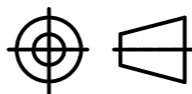
Technical requirements

- Rated load: DC 16V 2.5A
- Contact resistance: $\leq 0.03\Omega$
After test: $\leq 50\text{m}\Omega$
- Insulation resistance: $\geq 100\Omega$ DC250V
After test: $\geq 50\text{m}\Omega$
- Withstand voltage: 500VAC
- Insertion force: 3-30N
- Mechanical life: 5000 times
- Operation temperature range: $-20^\circ\text{C} \sim 70^\circ\text{C}$

TOLERANCE

X. XXX	± 0.05
X. XX	± 0.15
X. X	± 0.20
X.	± 0.30
ANGLE	$\pm 5.0^\circ$

PROTECTON



东莞市恒祺电子科技有限公司

Dongguan Hengqi Electronic Technology Co., Ltd

<https://www.hq-dz.com>

phone: 15812872448

TITLE:

DC电源插座

PART NO: DC-098

DRAWING NO: 11.5*6.2*5.3

DRAWN:

DATE:

18-10-08

UNIT:
mm

CHECKED:

DATE:

18-10-08

SCALE:
FULL

APPROVED:

DATE:

18-10-08

SIZE:
A4