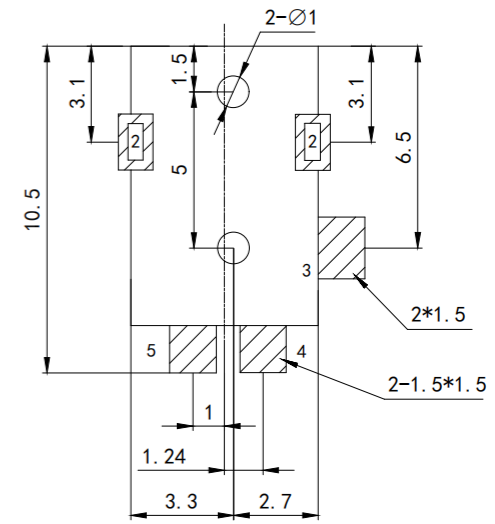
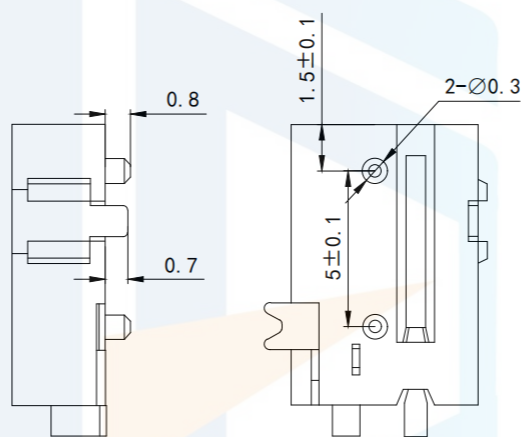
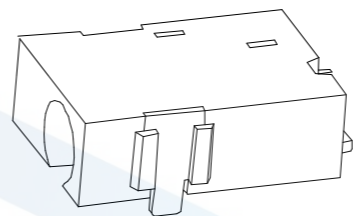
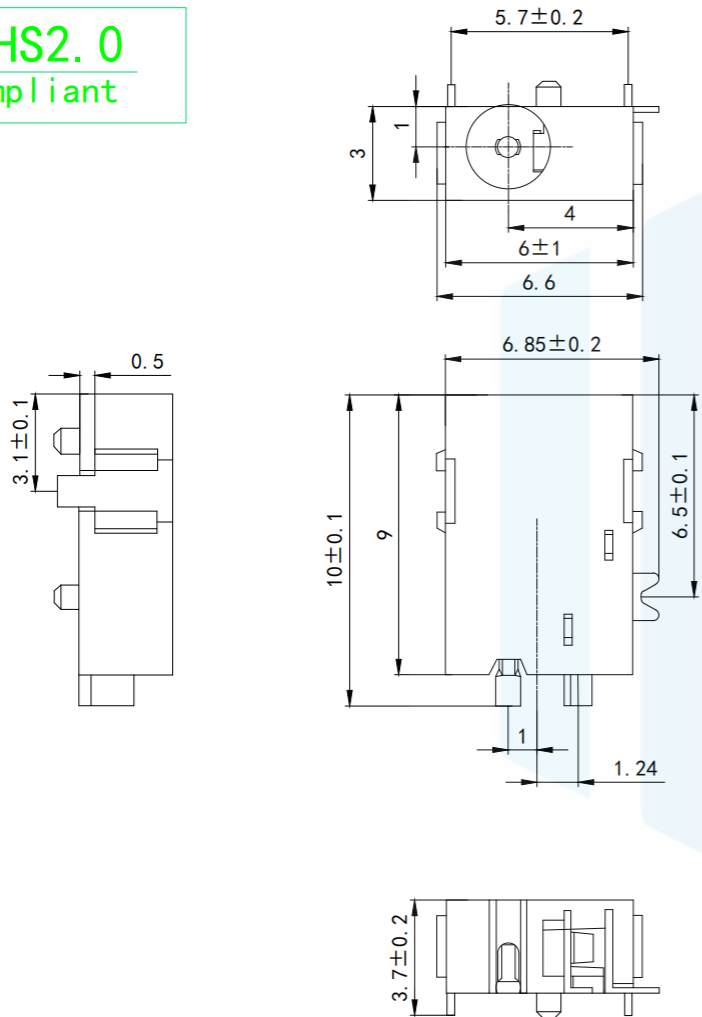


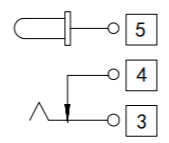
RoHS2.0
Compliant



P. C. B LAYOUT TOP VIEW

Technical requirements

1. Rated load: DC 30V 0.2A
2. Contact resistance: ≤0.03 Ω
3. Insulation resistance: ≥100Ω DC250V
4. Withstand voltage: AC 500V(50Hz)/min
5. Insertion force: 3~20N
6. Mechanical life: 5000 times
7. Operation temperature range: -40℃~55℃



TOLERANCE	X. XXX	±0.05		东莞市恒祺电子科技有限公司 Dongguan Hengqi Electronic Technology Co., Ltd	
	X. XX	±0.15		https://www.hq-dz.com phone:15812872448	
	X. X	±0.20	TITLE: DC电源插座		PART NO:DC-056A
	X.	±0.30			DRAWING NO:10*6.6*3
	ANGLE	±5.0°			
PROTECTON 	DRAWN:		DATE:	18-10-08	UNIT: mm
	CHECKED:		DATE:	18-10-08	SCALE: FULL
	APPROVED:		DATE:	18-10-08	SIZE: A4