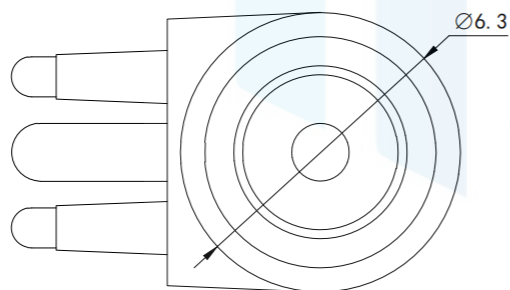
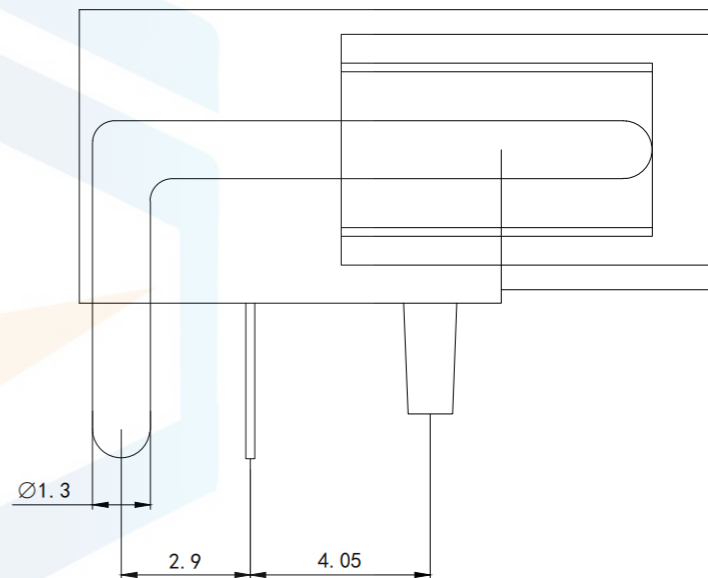
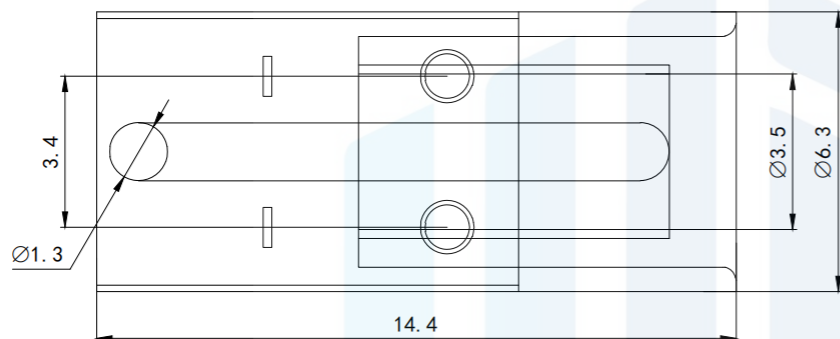

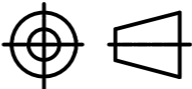


RoHS2.0  
Compliant



Technical requirements  
 Rated load: DC 30V 0.5A  
 Contact resistance:  $\leq 0.03 \Omega$   
 Insulation resistance:  $\geq 100 \Omega$  DC250V  
 Withstand voltage: AC 500V (50Hz)/min  
 Insertion force: 3~20N  
 Mechanical life: 5000 times

<b>TOLERANCE</b>			东莞市恒祺电子科技有限公司 Dongguan Hengqi Electronic Technology Co., Ltd					
X. XXX	$\pm 0.05$							
X. XX	$\pm 0.15$	https://www.hq-dz.com			phone: 15812872448			
X. X	$\pm 0.20$	TITLE: DC电源插座		PART NO: DC-002E				
X.	$\pm 0.30$			DRAWING NO: 14.4*7*6.3				
ANGLE	$\pm 5.0^\circ$	DRAWN:		DATE:	18-10-08	UNIT: mm		
<b>PROTECTON</b> 				CHECKED:		DATE:	18-10-08	SCALE: FULL
						APPROVED:		DATE: