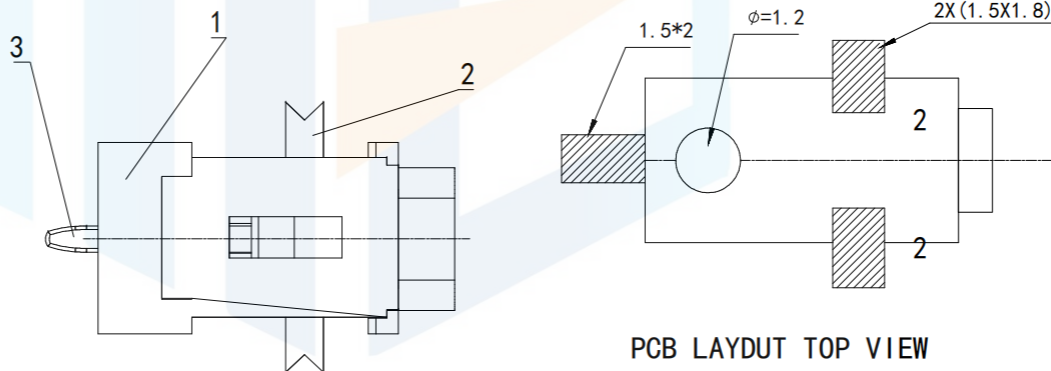
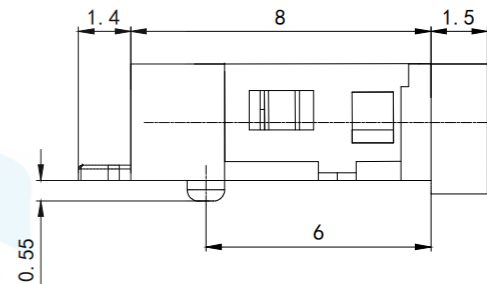
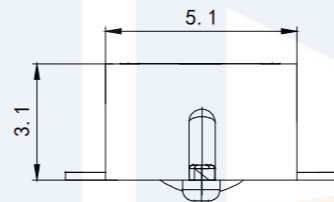
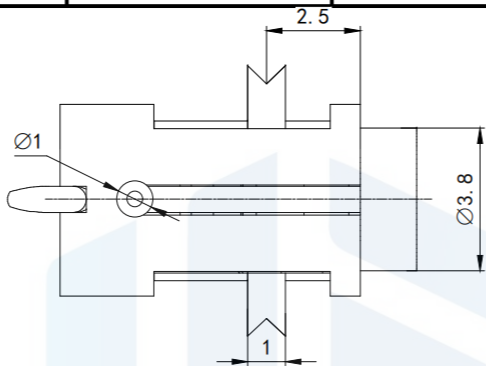
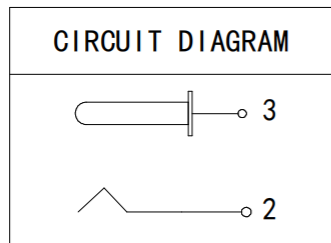
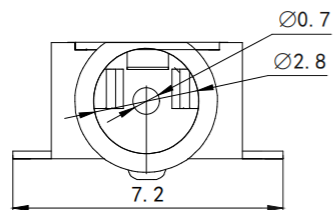


RoHS2.0  
Compliant



**Technical requirements**

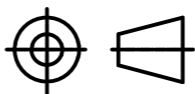
1. Rated load: DC 30V 1A
2. Contact resistance:  $\leq 0.03 \Omega$
3. Insulation resistance:  $\geq 100 \Omega$  DC250V
4. Withstand voltage: AC 500V(50Hz)/min
5. Insertion force: 3~20N
6. Mechanical life: 5000 times
7. Operation temperature range:  $-30^{\circ}\text{C} \sim 70^{\circ}\text{C}$

NO.	DESCRIPTION	MATERIAL	PLATED	QTY
1	HOUSING	PPA (BLACK)		1
2	冲件上盖	PHOSPHOR BRONZE T=0.2	AG	1
3	0.7针	H62 $\Phi=0.7$	AG	1

**TOLERANCE**

X. XXX	$\pm 0.05$
X. XX	$\pm 0.15$
X. X	$\pm 0.20$
X.	$\pm 0.30$
ANGLE	$\pm 5.0^{\circ}$

**PROTECTON**



东莞市恒祺电子科技有限公司  
Dongguan Hengqi Electronic Technology Co., Ltd

<https://www.hq-dz.com>

phone:15812872448

TITLE:  
DC电源插座

PART NO:DC-055B

DRAWING NO:9.5\*5.1\*3.1

DRAWN:

DATE: 18-10-08

UNIT:  
mm

CHECKED:

DATE: 18-10-08

SCALE:  
FULL

APPROVED:

DATE: 18-10-08

SIZE:  
A4